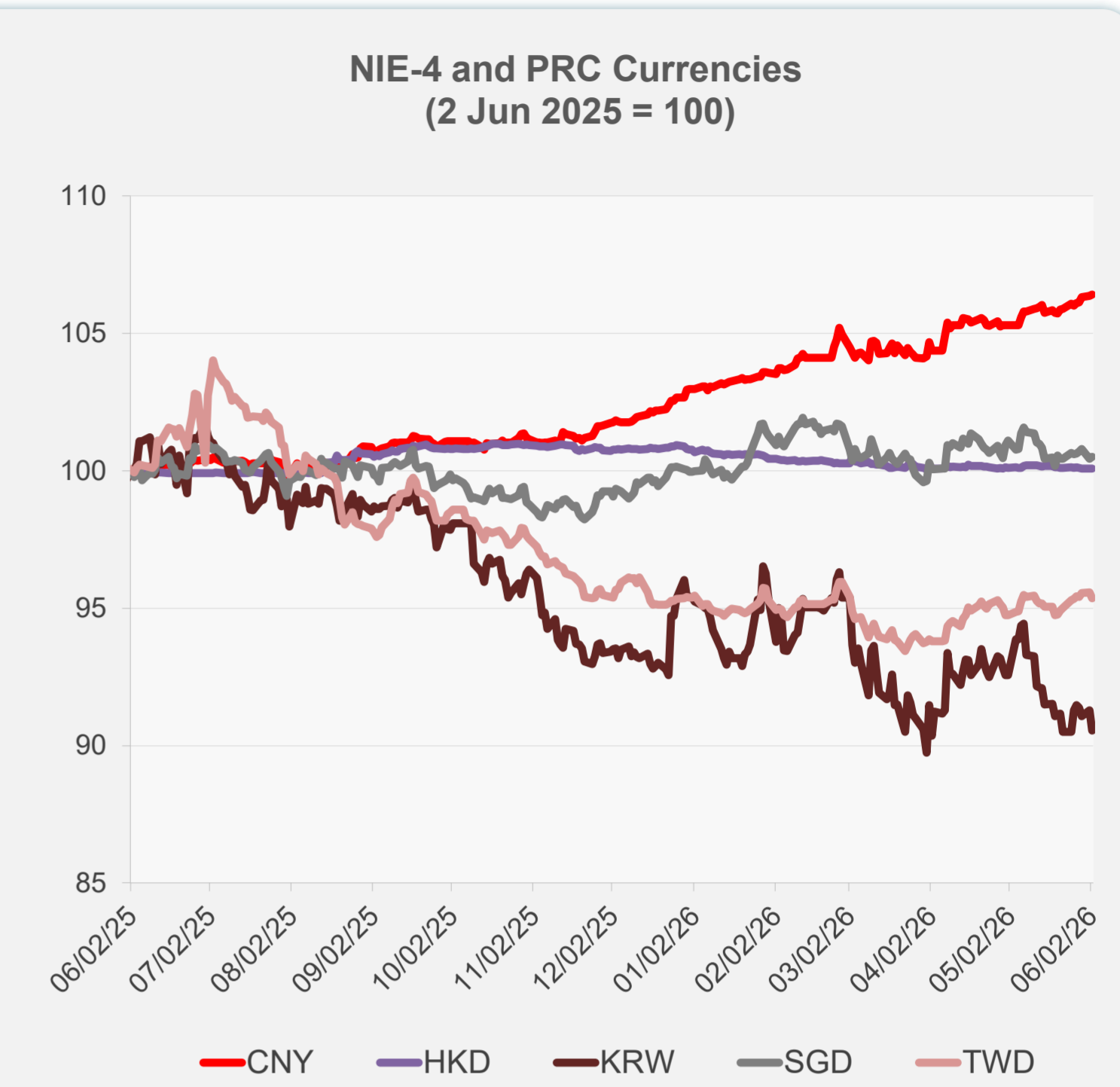
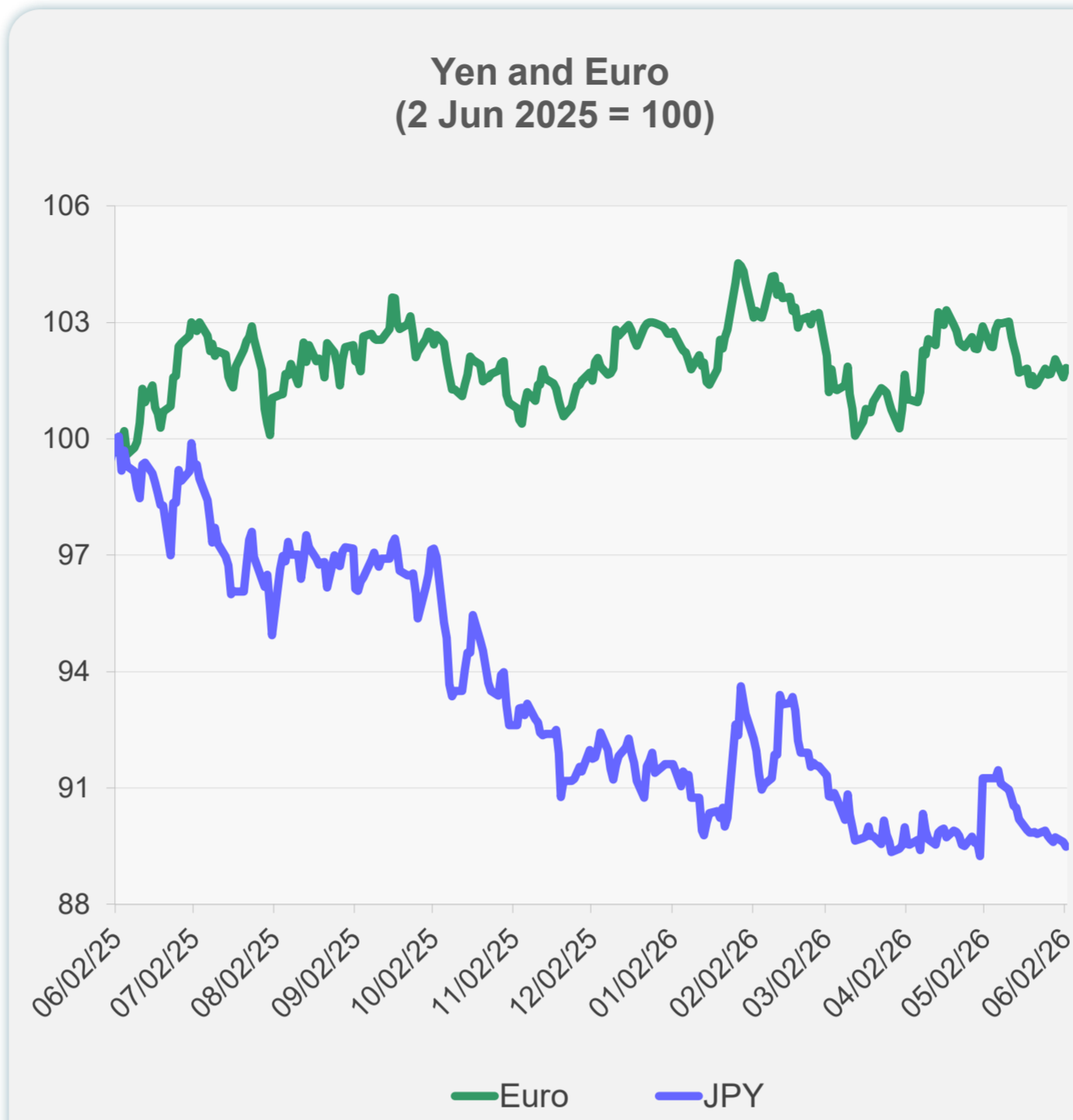
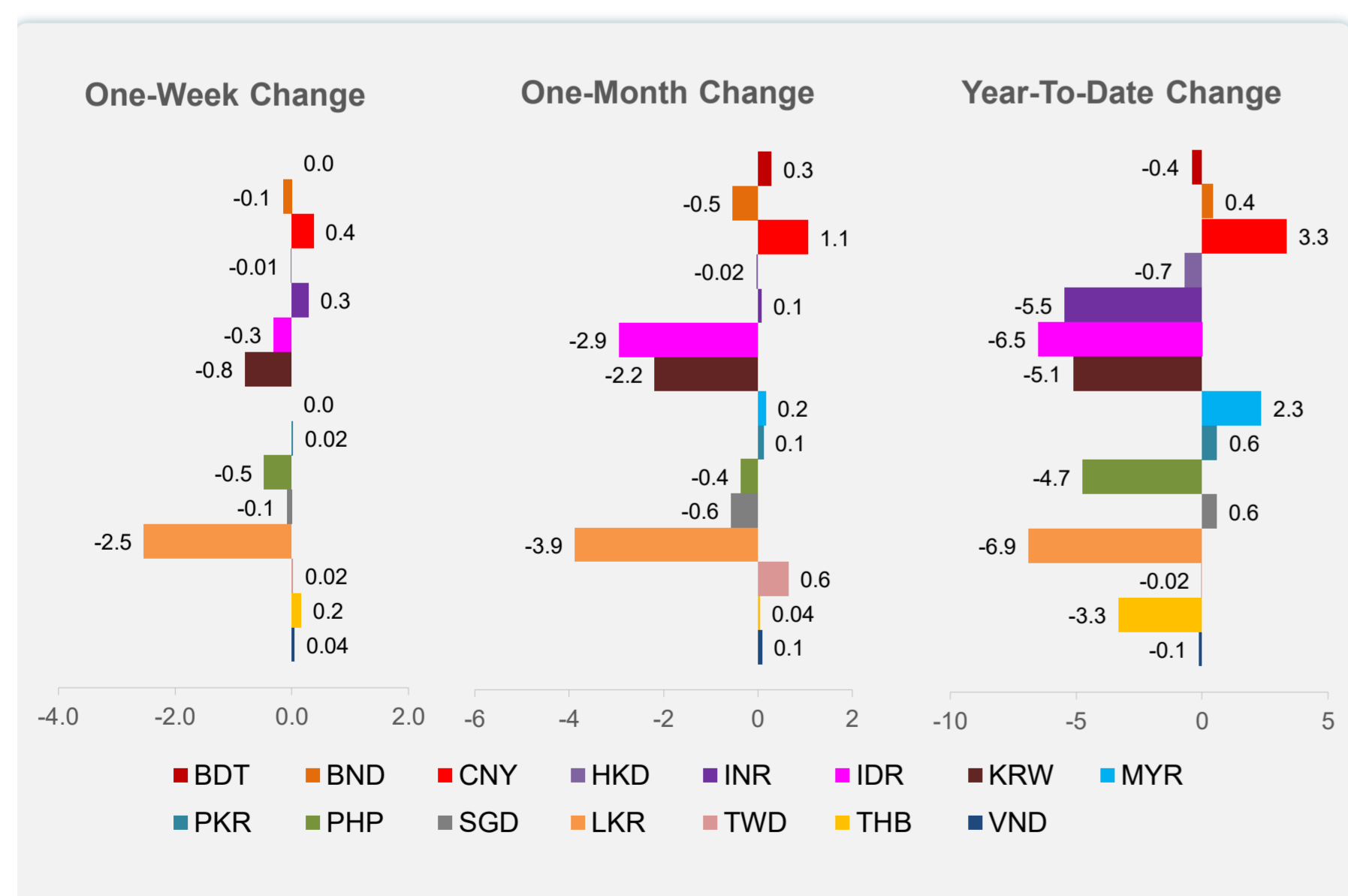
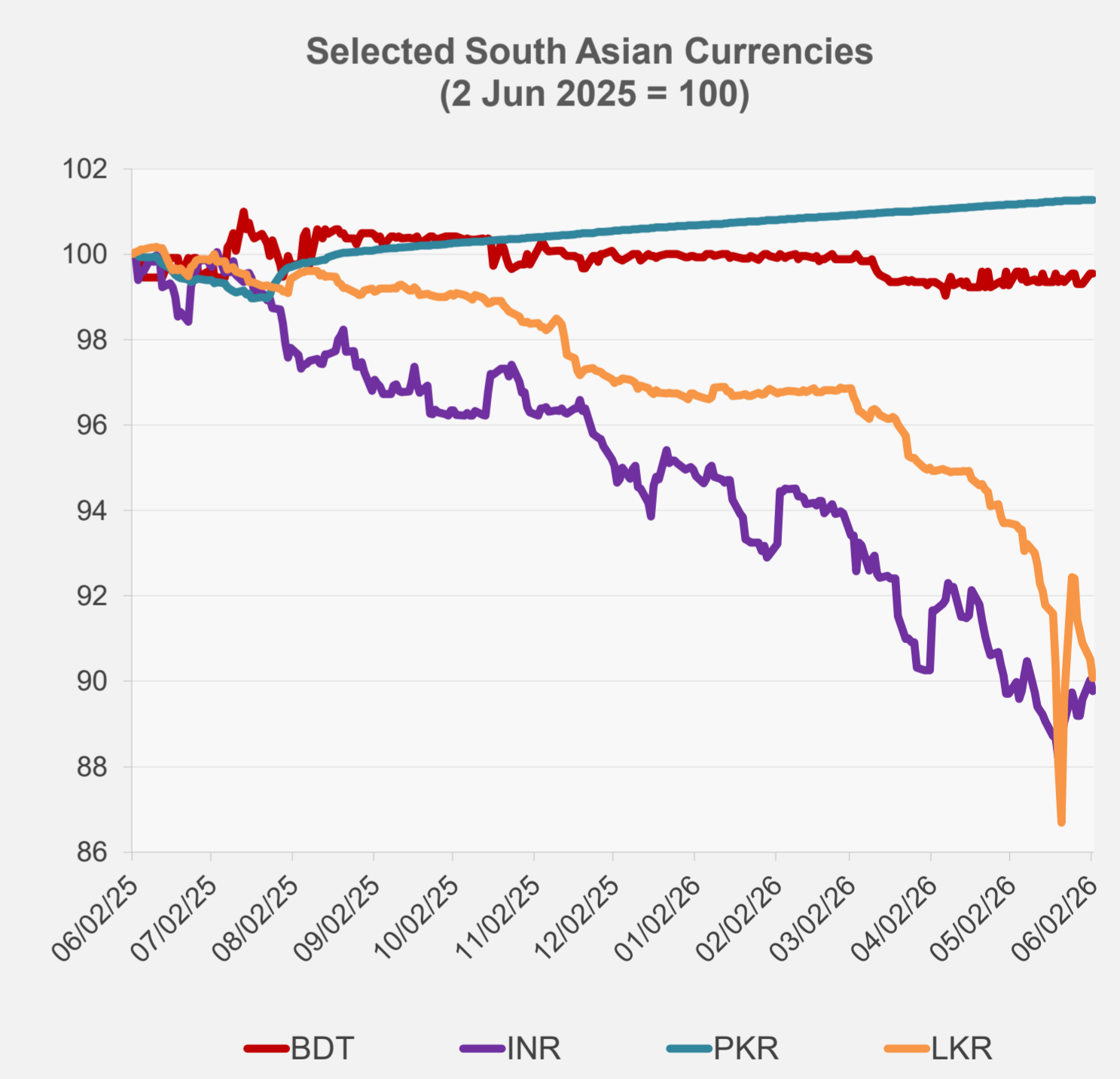
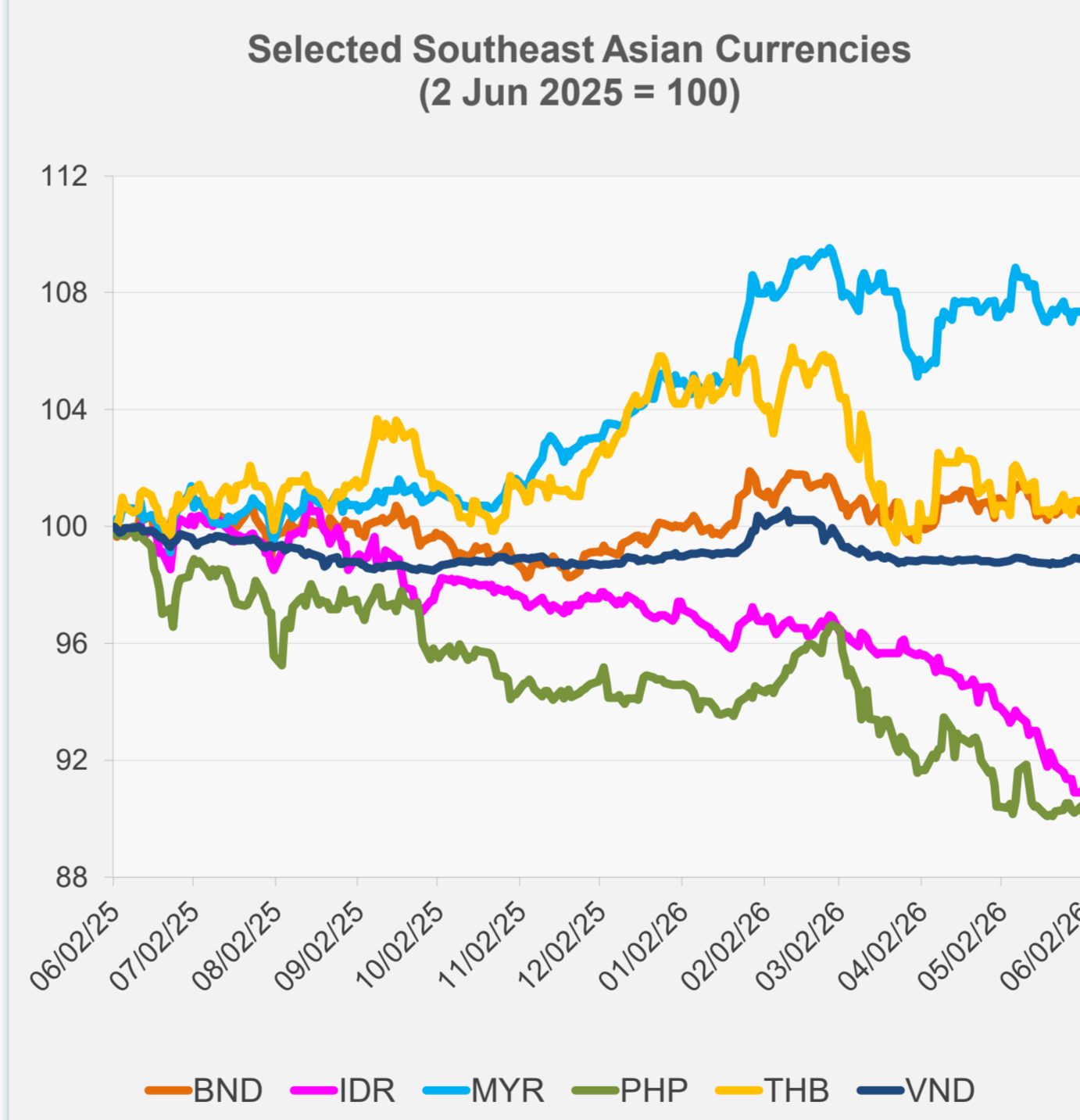


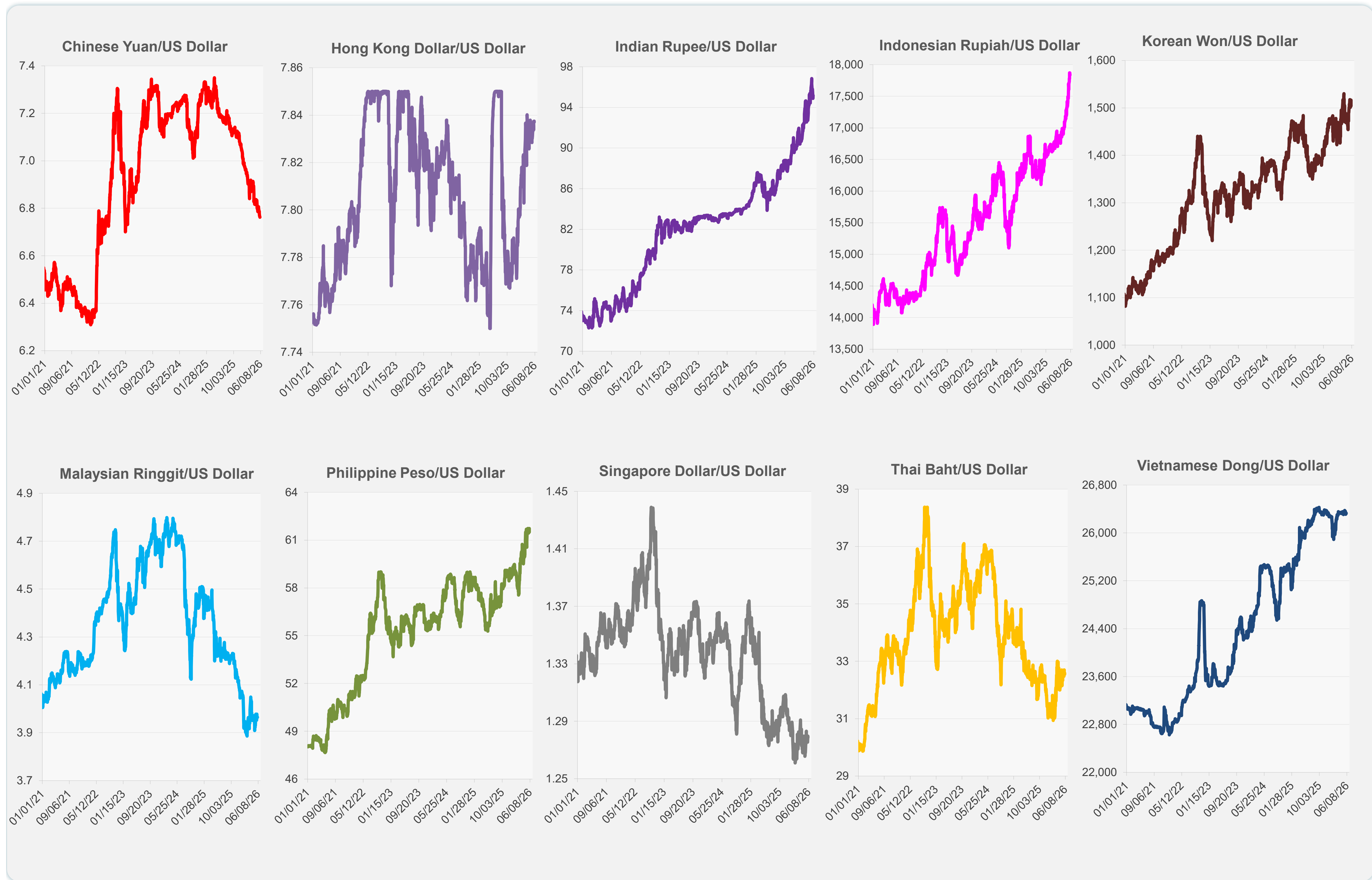
	Latest Closing	% change from Previous Day	% change from 01-Jan-26
Euro	0.86	0.23	-0.86
Japanese yen (JPY)	159.69	-0.14	-2.32
Bangladeshi taka (BDT)	122.75	0.00	-0.41
Brunei dollar (BND)	1.28	-0.06	0.42
Chinese yuan (CNY)	6.76	0.04	3.34
Hong Kong dollar (HKD)	7.84	0.01	-0.68
Indian rupee (INR)	95.17	-0.29	-5.45
Indonesian rupiah (IDR)	17,835.00	0.20	-6.50
Korean won (KRW)	1,516.40	-0.80	-5.10
Malaysian ringgit (MYR)	3.97	0.00	2.35
Pakistan rupee (PKR)	278.45	0.00	0.60
Philippine peso (PHP)	61.73	-0.36	-4.73
Singapore dollar (SGD)	1.28	0.07	0.57
Sri Lanka rupee (LKR)	332.50	-0.49	-6.89
Taipei,China NT dollar (TWD)	31.45	-0.21	-0.02
Thai baht (THB)	32.59	-0.12	-3.31
Vietnamese dong (VND)	26,332.00	-0.04	-0.12



NIE = Newly Industrialized Economies

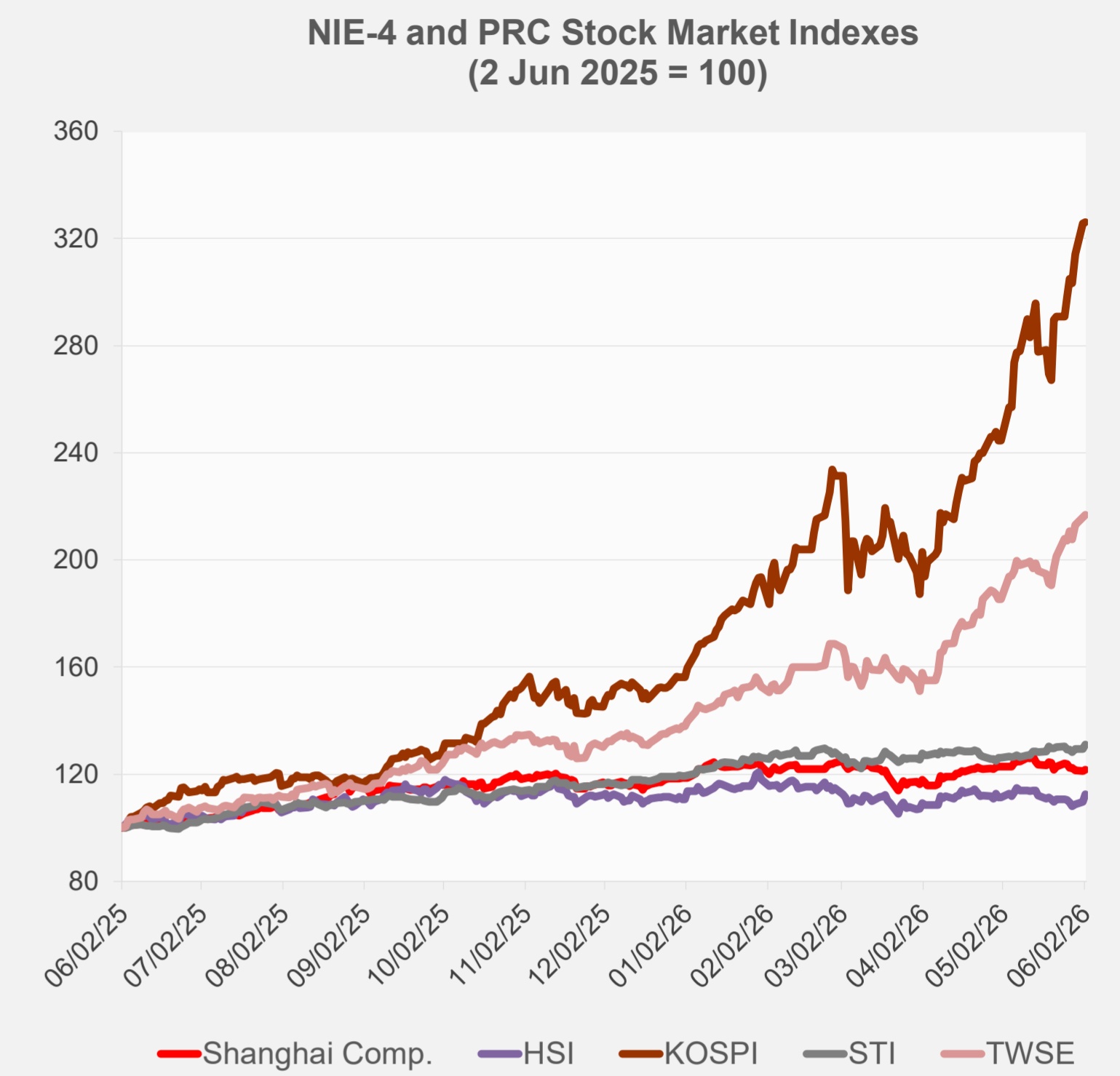


Note: Negative/Decreasing values indicate depreciation of local currency, and positive/increasing values indicate appreciation.
Source: ADB calculations using data from Bloomberg and Haver Analytics.

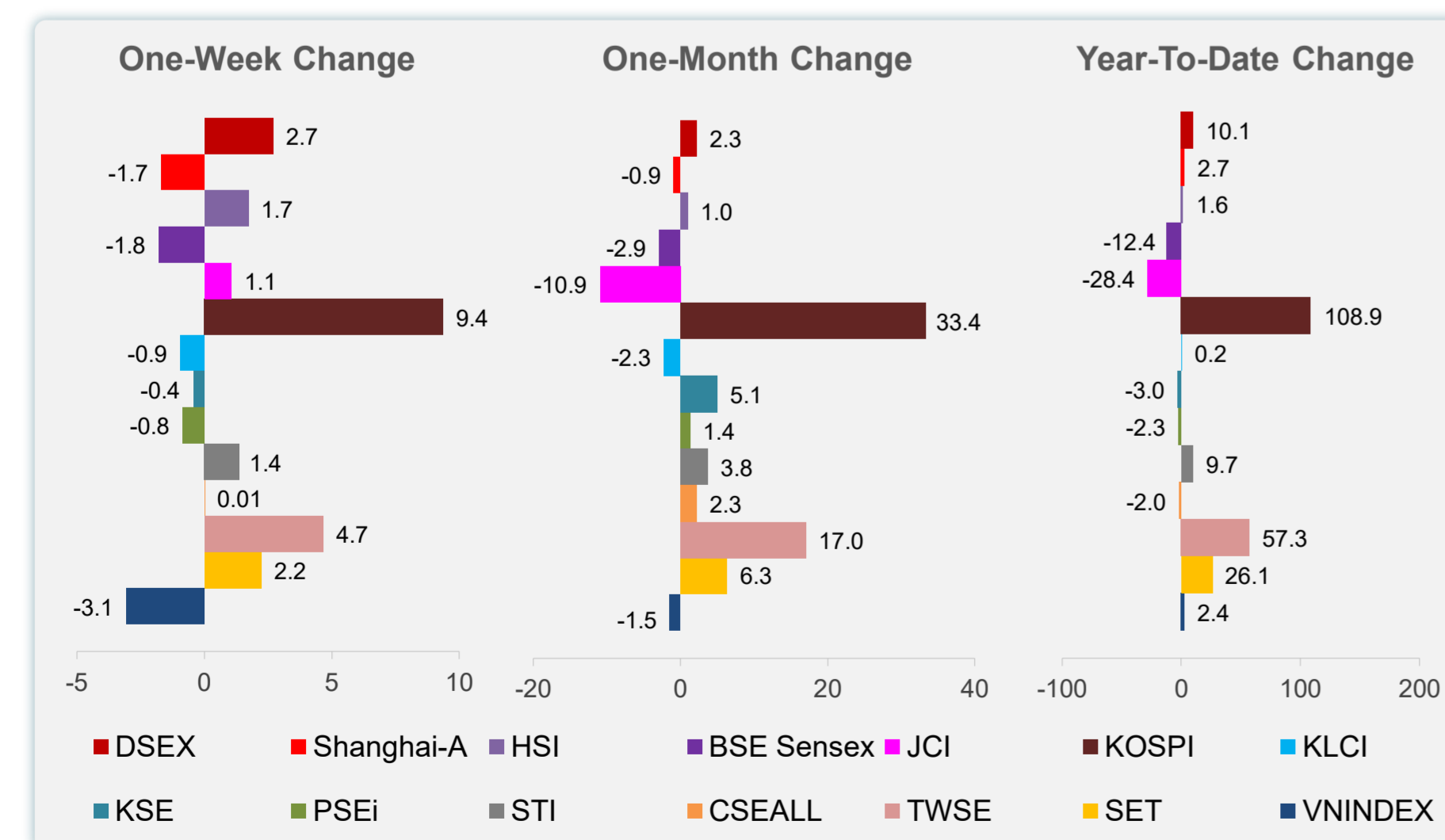
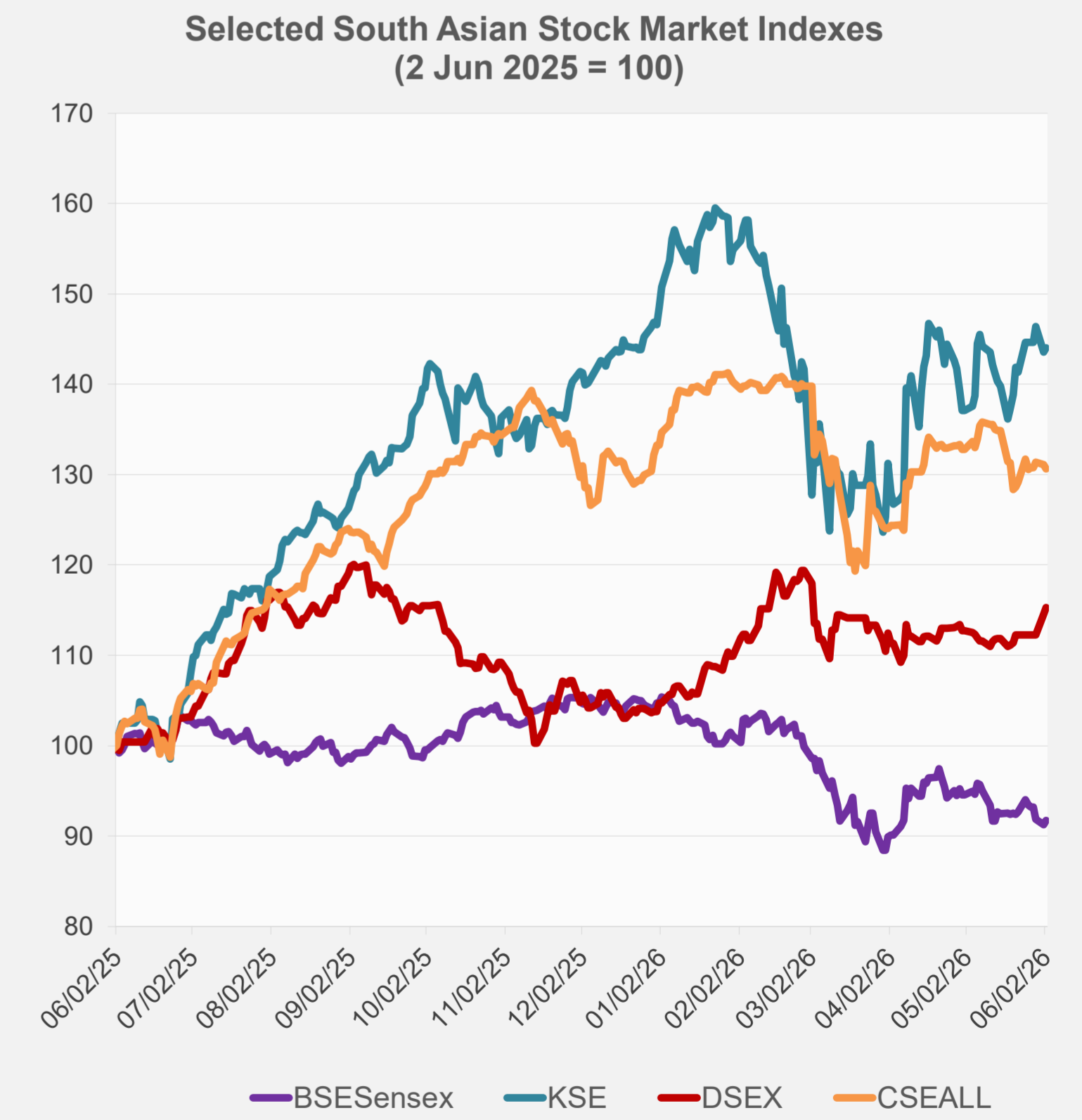
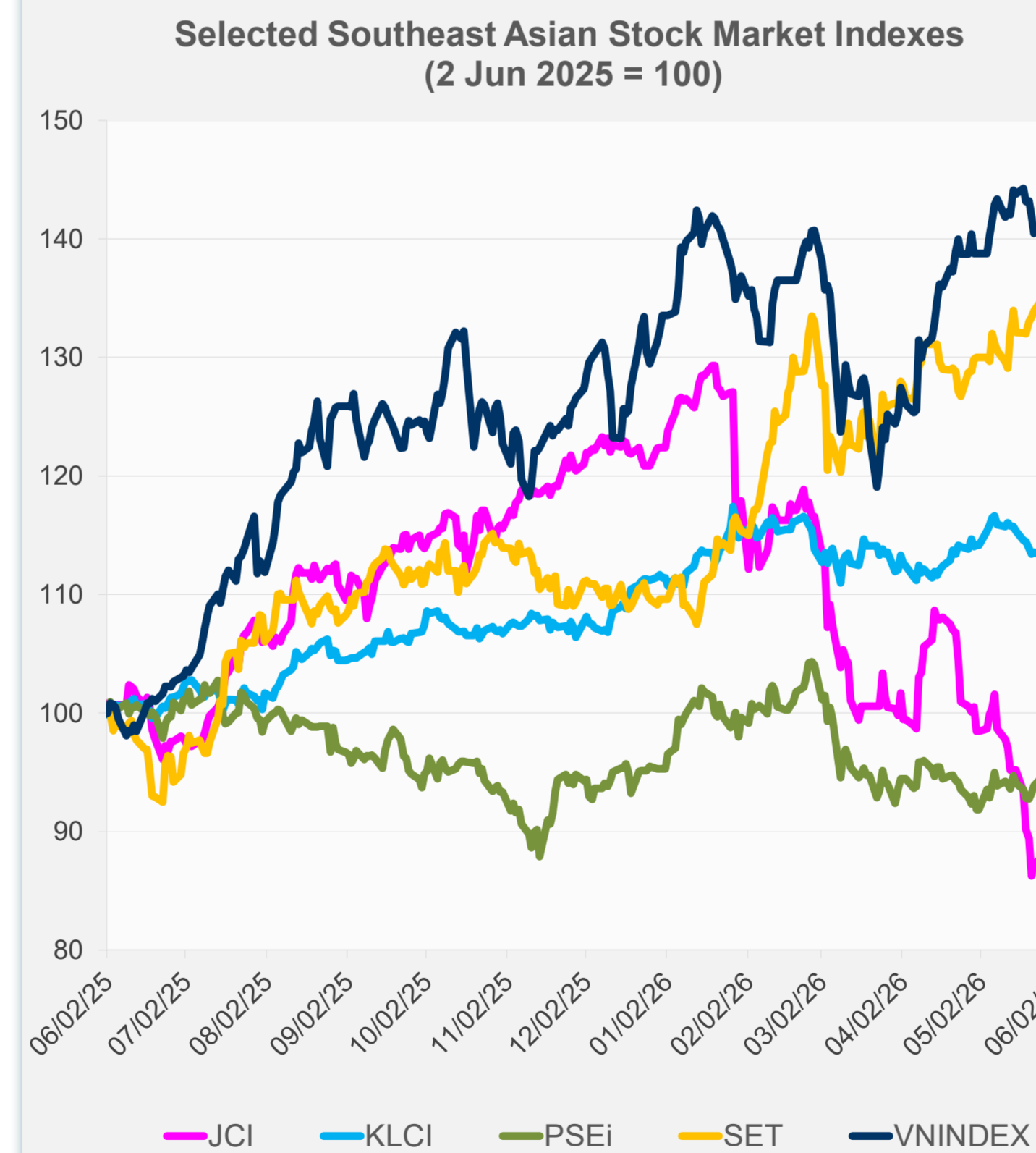


Source: Haver Analytics.

	Latest Closing	% change from Previous Day	% change from 01-Jan-26
US Dow Jones Ind Avg	51,307.79	0.45	6.75
US NASDAQ	27,093.90	0.03	16.57
US S&P 500	7,609.78	0.13	11.16
UK FTSE 100	14,200.20	3.62	26.09
EURO STOXX 50	6,107.85	1.21	5.46
Japan NIKKEI 225	66,734.24	-0.30	32.57
Bangladesh DSEX	5,406.20	0.62	10.09
PRC Shanghai Comp.	4,075.10	0.43	2.68
Hong Kong, China HSI	26,038.32	2.52	1.59
India BSE Sensex	74,649.84	0.52	-12.37
Indonesia JCI	6,195.43	1.11	-28.35
Korea, Rep. of KOSPI	8,801.49	0.15	108.85
Malaysia KLCI	1,683.07	0.00	0.18
Pakistan KSE 100	171,166.90	0.33	-3.01
Philippines PSEi	5,912.69	1.95	-2.32
Singapore STI	5,097.42	1.18	9.71
Sri Lanka CSEALL	22,177.65	-0.39	-1.97
Taipei, China TWSE	45,557.31	0.48	57.29
Thailand SET	1,588.06	1.26	26.07
Viet Nam VNINDEX	1,826.47	-0.98	2.35



NIE = Newly Industrialized Economies



Sources: ADB calculations using data from Bloomberg and CEIC Data Company.



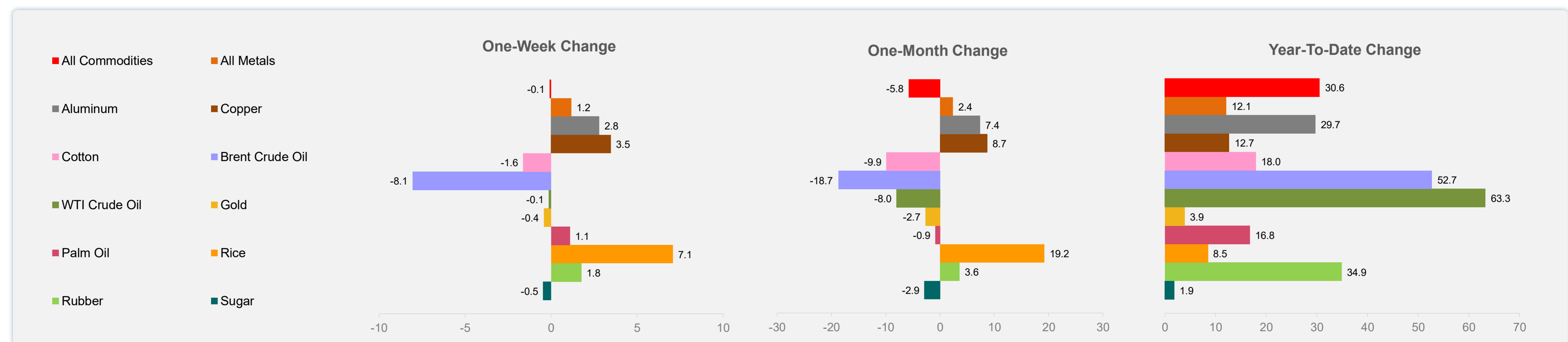
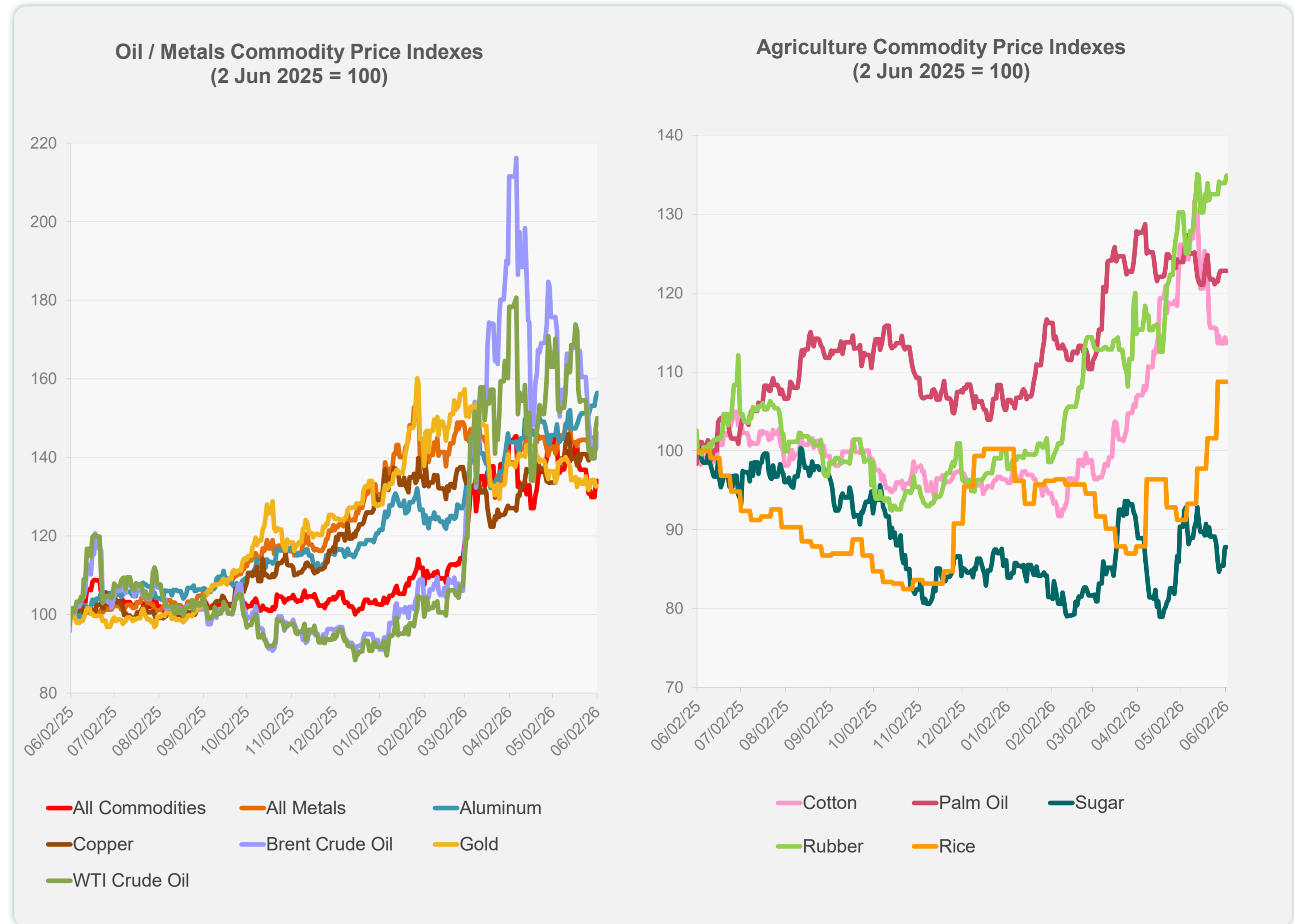
Sources: ADB calculations using data from Bloomberg and CEIC Data Company.

Daily Market Watch
COMMODITY PRICES

3 June 2026, 9:00 AM Manila

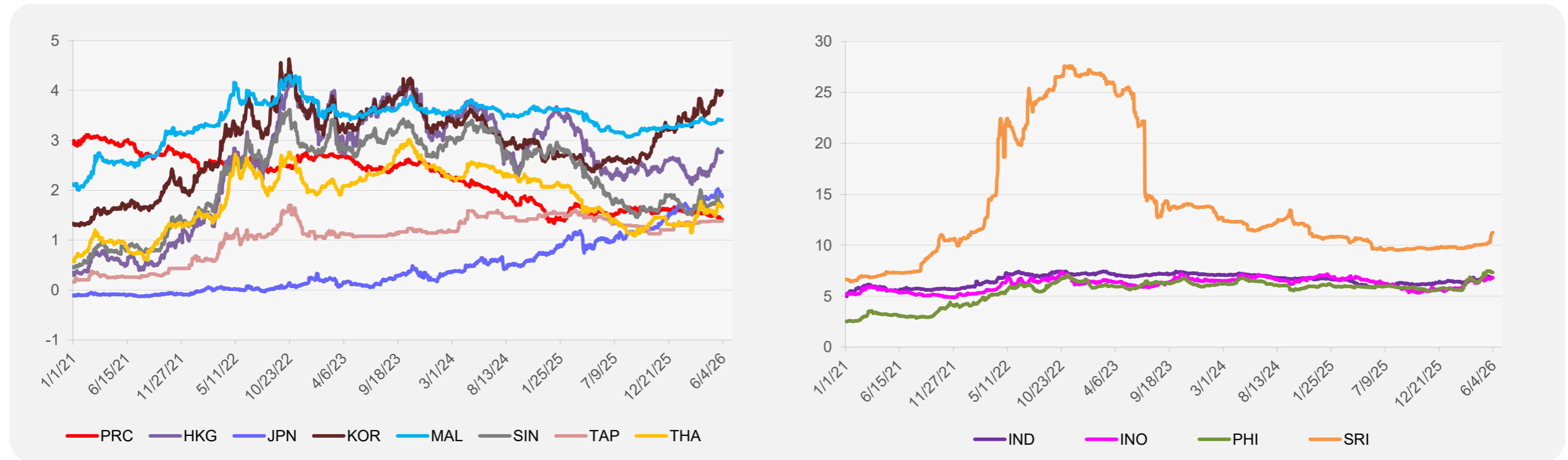
	Unit	Latest Closing	% change from Previous Day	% change from 01-Jan-26
S&P All Commodities	US\$	716.18	0.63	30.57
S&P All Metals	US\$	497.60	0.82	12.13
Aluminum	US\$/metric ton	3,850.59	0.79	29.74
Copper	US\$/metric ton	14,036.66	1.66	12.71
Cotton	US cents/lb	73.16	-0.65	17.96
Brent Crude Oil	US\$/barrel	95.38	-2.35	52.73
WTI Crude Oil	US\$/barrel	93.76	1.74	63.29
Gold	US\$/troy oz	4,488.86	0.09	3.92
Palm Oil	US\$/metric tonne	1,131.04	0.00	16.76
Rice ¹	US\$/metric ton	484.00	0.00	8.52
Rubber ²	US\$/kg	290.00	0.69	34.88
Sugar	US cents/lb	15.07	0.00	1.89

¹ Latest closing price from 27 May 2026.
² Singapore Exchange, Ribbed Smoked Sheet Rubber.

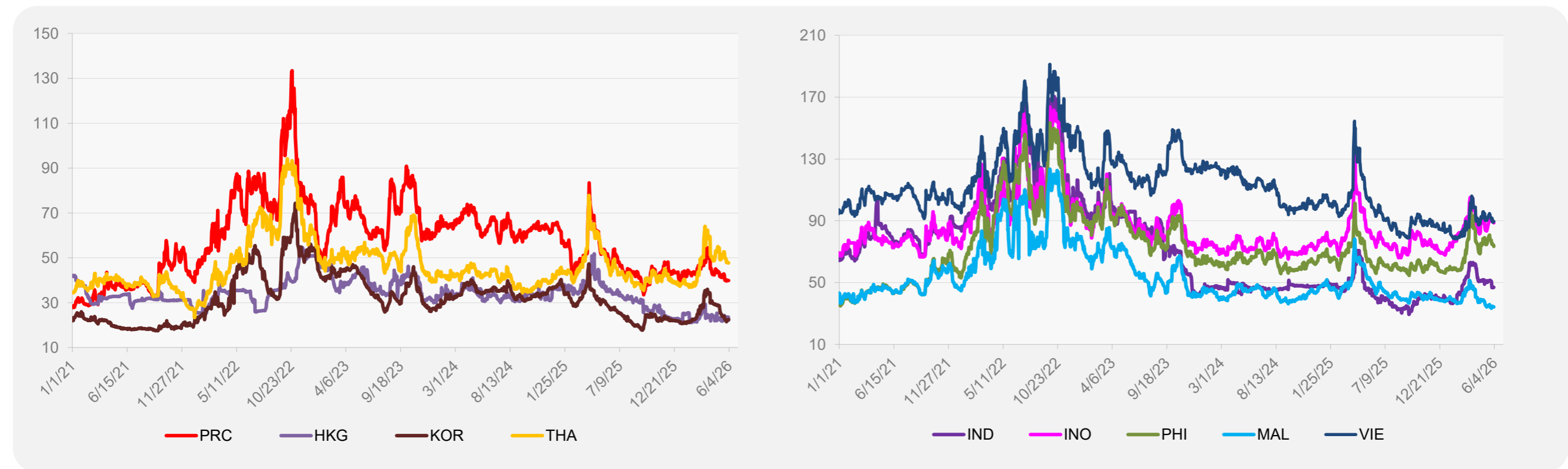


Source: ADB calculations using data from Bloomberg.

5-YEAR LOCAL CURRENCY GOVERNMENT BOND YIELDS (%)



5-YEAR CREDIT DEFAULT SWAP¹



¹ In USD and based on sovereign bonds.
Source: ADB calculations using data from Bloomberg.